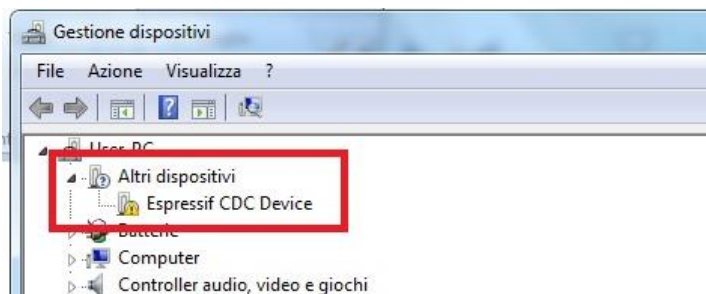


ORTUR LASER MASTER 2 Pro S1 and S2 Driver issues (WIN7/8)

Resolution for Driver issues on ESP MCU Espressif CDC Device Error.

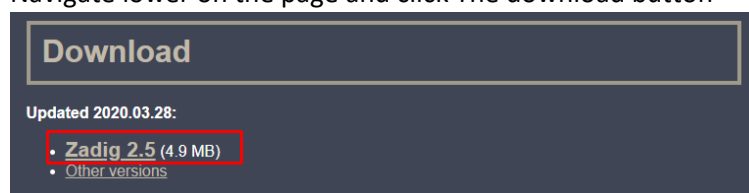
Please connect your ORTUR to the computer and power ON the machine making sure the emergency switch is NOT engaged and the Homing Cycle is complete.



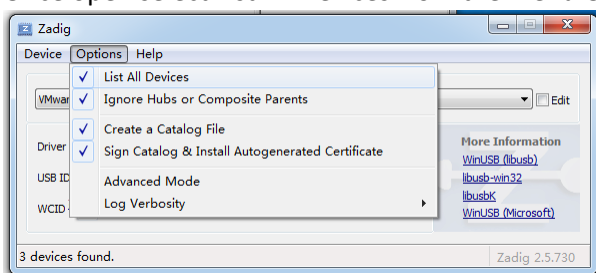
Applicable to WINDOWS 7 and Windows 8 ONLY

Visit <https://zadig.akeo.ie/>

Navigate lower on the page and click The download button

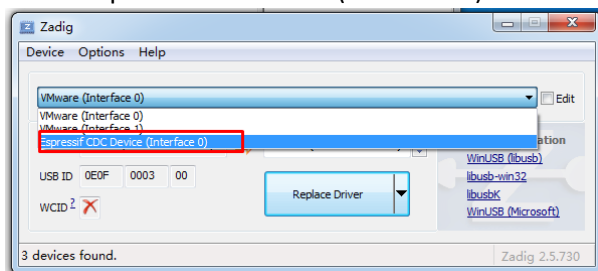


- Once download is complete, please run the application with Administrator Rights
- Once open select List All Devices from the menu Options.

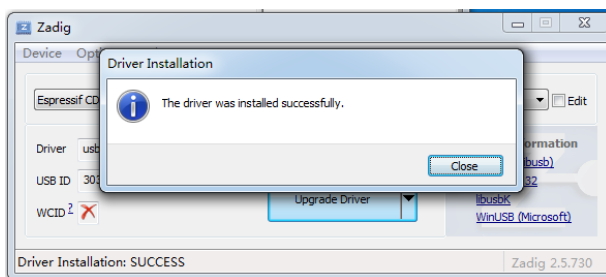
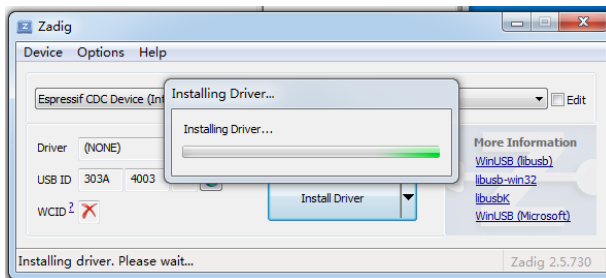
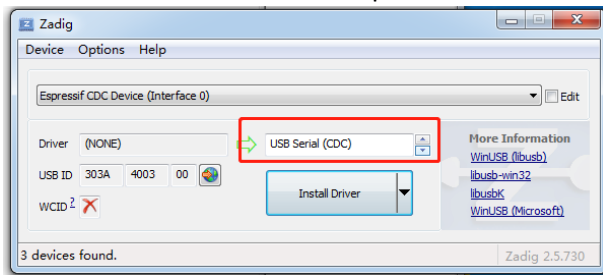


Wait for the refresh

- Select Espressif CDC Device (Interface 0) from the drop-down list



- Select USB Serial (CDC) from the list of drivers available, click the Install Driver button, and wait for the installation to complete.



- When you're done, you can close the Zadig software
- The New Espressif CDC Device (Interface 0) (COM X) port in Device Manager. Note the COM number might be different in your machine

